

June 2021 E-Newsletter

From: Community Foundation of Marquette County<development@cfofmc.org>

Date: 6/28/2021 2:32 PM

Subject: June 2021 E-Newsletter

[View this email in your browser](#)

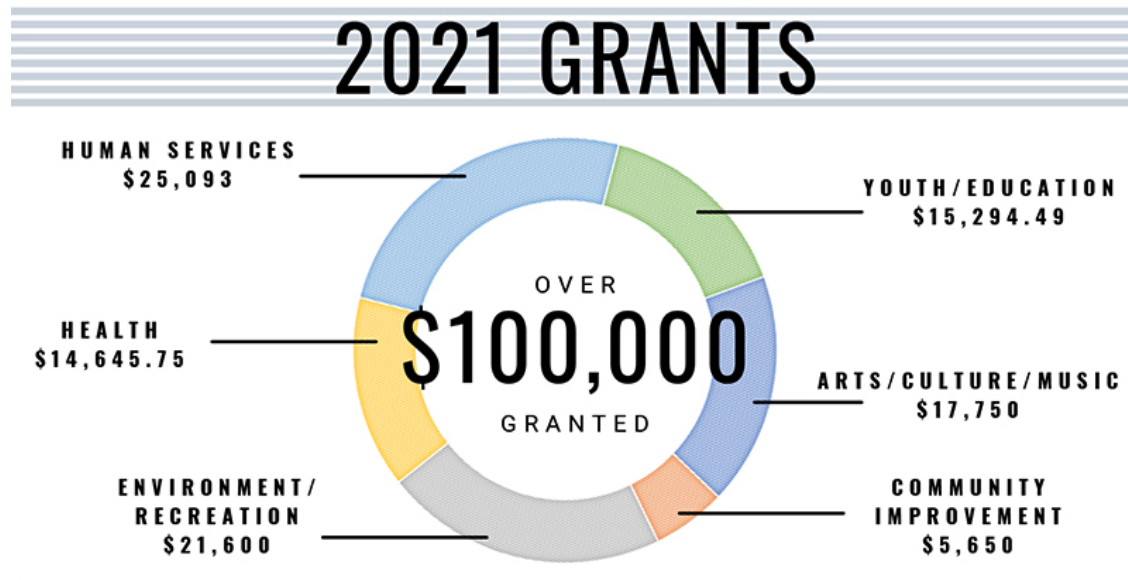


June 2021 ----- E-Newsletter



Morning on Washington Street, an oil painting by local artist Jen Luoma. She describes her paintings as a "focus on lighting and the small moments that seem to go unnoticed in our day to

day lives". Check out more of Jen's work on her [website](#), [Facebook](#) or [Instagram](#). Jen also has work on display at Contrast Coffee on Third Street in Marquette through the end of July.



Over \$100,000 in Competitive Grants Awarded

The Community Foundation, including four affiliate funds – Negaunee, Greater Ishpeming, Marquette, and Gwinn Area – recently granted over \$100,000 as part of the annual competitive grant cycle. This grant cycle included funds from the COVID-19 Community Response Fund to support nonprofits that continue to navigate organizational and operational needs from ongoing pandemic response.

Congratulations to the following grant recipients:

Gwinn Area Community Fund

906 Community Church
 Forsyth Township Public Library
 Great Lakes Rodeo of Michigan
 Grow & Lead: Community and Youth Development

Greater Ishpeming Area Community Fund

Cliffs Shaft Mine Museum

Hope Free Evangelical Lutheran Church
Ishpeming Rotary - The Ishpeming Faire Committee
Kiwanis Club of Ishpeming
Michigamme Township Downtown Development Authority
Partridge Creek Farm
Superior Shore Systems, Inc.
UP Disc Golf Association
Wesley United Methodist Church

Negaunee Area Community Fund

City of Negaunee
Historic Vista Theater/Peninsula Arts Appreciation Council
Lakeview Elementary School
Marquette County Habitat for Humanity, Inc.
Marquette County Law Enforcement Administrator's Association
Negaunee Beautification Committee
Negaunee Public Schools

Marquette Area Community Fund

8-18 Media
Big Brothers Big Sisters
Camp New Day U.P.
City of Marquette Marquette Senior Center
Da Upper Yoopers' Barbershop Chorus
Feeding America West Michigan
Girl Scouts of the Northwestern Great Lakes, Inc.
Grow & Lead: Community and Youth Development
Hiawatha Music Non-Profit Corp
Janzen House
Lake Superior Hospice Association
Lake Superior Village
Marquette Lions Club
Marquette County Law Enforcement Administrator's Association
Michigan 4-H Foundation
MSHS Robotics
Music For All Kids

New Free Store
Northstar Academy
Planned Parenthood of Michigan
Propylon Non-Profit Housing Corp.
Room at the Inn
Silver Creek Church
St. Anthony's Church
Start the Cycle
Superior Arts Youth Theater
Superior String Alliance, Inc
Superior Watershed Partnership and Land Trust
The American Red Cross
Trillium House
United Way of Marquette County
Upper Peninsula Children's Museum
Willow Farm Therapeutic Riding
YMCA of Marquette County

Grant distribution events were recently held for the Ishpeming, Negaunee and Marquette affiliates to celebrate the grantees making an impact on residents of Marquette County. We are so grateful to be able to gather in person to celebrate!



A final grant distribution event will be held on July 4 in Gwinn at The Up North Lodge. This event is part of the popular Bike Night event series and is a fundraiser for the [Gwinn Area Community Fund](https://www.facebook.com/GwinnAreaCommunityFund).

To view photos from the grant events, please visit the [Community Foundation of Marquette County's Facebook page](#).



Range Bank Clean Energy Fund Applications Now Open

The Community Foundation is currently seeking applications for a newly established fund supporting clean energy initiatives in Marquette County. The Range Bank Clean Energy Fund was recently established to assist nonprofits with projects and programs that lead to reductions in energy consumption and/or increase utilization of renewable energy sources such as wind and solar.

In 2018, with funding from the Charles Stewart Mott Foundation and Council of Michigan Foundations' program *Community Foundations for Clean Energy*, the Community Foundation embarked on a multi-year project around solar energy. Working in partnership with the Superior Watershed Partnership and Michigan Energy Options, the team created educational materials, developed three demonstration sites that illustrate energy efficiency and renewable energy practices in Marquette County, and convened an energy awareness community event.

The team identified two households in Marquette County, installing a solar array for one Ishpeming family and assisting the other household with purchasing solar energy from the solar farm operated by the Marquette Board of Light and Power. To demonstrate the potential cost savings and efficiencies of renewable energy for the business community, the partnership also installed solar panels on the Range Bank McClellan branch building in Marquette.

As cost savings began to be realized at the McClellan branch building, Range Bank established the Range Bank Clean Energy Fund through the Community Foundation to encourage non-profits to invest in energy saving projects. The work of this initiative, through the Range Bank Clean Energy Fund, will continue to impact residents and organizations in Marquette County.

Applications for the Range Bank Clean Energy Fund can include requests for physical improvements such as LED lighting and signage, building insulation, solar equipment, battery storage and station charging. Grant requests to support clean energy programs that center on community engagement and education are also welcome. Applicants must be qualified nonprofit organizations serving Marquette County. Grant requests can be up to \$5,000. Applications are due by Friday, July 16 at 5pm. [To apply, please visit our website.](#)



JUMPSTART A HEART!

AEDs for Marquette County

Jumpstart a Heart! Fundraising Efforts Continue

JUMPSTART A HEART is a joint effort by Marquette County Law Enforcement Administrators Association (MCLEAA) and the Community Foundation of Marquette County. The goal is to raise \$81,454.50 to purchase new AED equipment for Forsyth Township Police, Negaunee City Police, Michigan State Police, Chocolay Township Police, Marquette City Police, Marquette County Sheriff's Department, and the Upper Peninsula Substance Enforcement Team.

Some of the current equipment is over 15 years old, which means it has passed life expectancy, is no longer reliable, and not compatible with equipment used by EMS teams. Having updated equipment and training will allow for a smooth connection and switch over from the AED unit to advanced lifesaving equipment on scene. Every officer utilizing the AED will have training to operate the equipment along with corresponding CPR and First Aid skills. The Community Foundation of Marquette County is proud to serve as the fiduciary for this important project.

Please consider a tax-deductible donation to help JUMPSTART A HEART!

- [Visit our website](#) to give online.
- [Donate through the Go Fund Me campaign by clicking on this link.](#)

- Send a check to Community Foundation of Marquette County, PO Box 37, Marquette, MI 49855.
Please note "Jumpstart a Heart" in the memo field.



(l-r): Breann Steeland, Administrative and Finance Assistant; Margi Mallo, Committee Member; Lisa Jahnke, Trustee; Zosia Eppensteiner, CEO; Fred Taccolini, Trustee; Judy Vonck, Trustee; Alex Kofsky, Trustee; Maura Davenport, Trustee; Melissa Matuscak Alan, Donor and Community Outreach Associate.

Community Foundation of Marquette County Core Values

In spring 2021, the Community Foundation Board of Trustees' annual retreat included defining a set of core values. Nonprofit consultant Cedric Calhoun led the process and the Board of Trustees officially adopted these core values in May 2021:

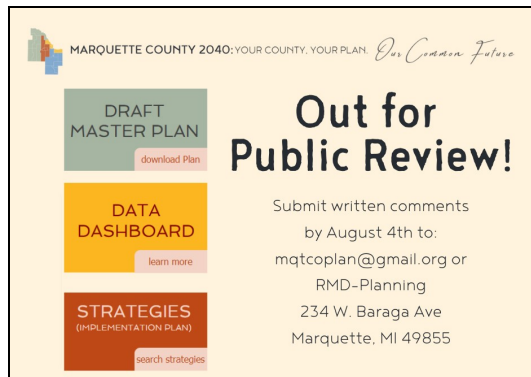
Community First

Our community includes all residents of Marquette County. Our focus is forever and we promise to constantly discover, cultivate and promote new opportunities to help all people within our community reach their full potential.

Dependability - We preserve donor intent and hold ourselves accountable to those who place their trust in us and collaborate with others to build a better tomorrow;

Service – We nurture lifelong relationships with our donors across generations by being flexible and responsive to the changing needs within our community;

Passion – We take our job seriously and are committed to showing through our appreciation and enthusiasm to donors, grantees, volunteers and staff that we are all in this together to create maximum community impact.



COMMUNITY CORNER: Marquette County Releases Draft of Master Plan, Seeks Public Input

From the Marquette County Planning Division:

The 2040 Master Plan is the first comprehensive update to the County's master plan since 1982, and its objective is to help local leaders and community members answer the following question: What do we want Marquette County to be like in 2040? As such, the 2040 Master Plan will guide public policy in Marquette County for the next two decades.

The draft 2040 Master Plan, strategies, and an interactive online data dashboard can be found at www.mqtccoplan.org. The Marquette County Planning Commission will review all comments received, hold a public hearing at the close of the review period on August 4,



THE BIGGER PICTURE: Provide Feedback on Eagle Mine and "Unlock" Donations to the Community Foundation of Marquette County

From the Voconiq Local Voices website:

Eagle Mine has engaged Voconiq Local Voices to provide communities neighboring its' operations with the opportunity to express their views and experiences.

Voconiq Local Voices project aims to improve engagement between Eagle Mine and your community by increasing understanding and generating better relationships and outcomes. Eagle Mine has committed to using community insights in their decision-making, and while they may not be able to solve every issue raised, the business will be better informed on the things that matter most to your local community. So have your say about what's important to you and your community can benefit from our rewards program.

2021, and vote on final approval of the 2040 Master Plan thereafter.

The County Planning Division welcomes public feedback. Please submit your written questions and comments to mqtcoplan@gmail.com or to the following mailing address:

County of Marquette
Resource Management and
Development - Planning Division
234 W Baraga Ave.
Marquette, MI 49855

Participation is 100% confidential and every completed survey unlocks \$10 in donations to a local community group - including the Community Foundation!

Participate in the survey by [clicking this link.](#)

GIVE NOW

The mission of the Community Foundation of Marquette County is to
enrich the lives of all people in Marquette County, by:

Connecting donors with community needs;

Building permanent funds for charitable giving;

Distributing scholarships and grants;

Leading and collaborating to address community opportunities.

